

Beta Education Panel: Beta Transformation

Marcella Carr, BSN, RN

Mary Morris-Bradley, BSN, RN

Sharon Burnett, MSHSA, BSN, RN

Nadirah Keith, DNP, FNP-C

Christopher Otto, BSN, RN, CCRN

Kenya Smith, MSN, PMHNP-BC



Beta Transformation Panel Discussion

July 10, 2019

Westin Lombard Yorktown Center

Facilitator:

Marcella Carr, BSN, RN

Dean of Sponsors



Outcomes

At the end of this panel discussion participants:

- **will be able to identify barriers that decrease beta transition to graduate chapters**
- **will be able to evaluate, integrate and apply information shared during panel to create /design plan to increase beta transition**



Panel Topic Intro

- **Professional Development**
 - Vital
 - Lifelong learning
 - Engage
 - Develop and maintain competence
 - Enhance professional practice
 - Support career goals
- **Nursing Organizations**
 - What they are?



What's in it for me?

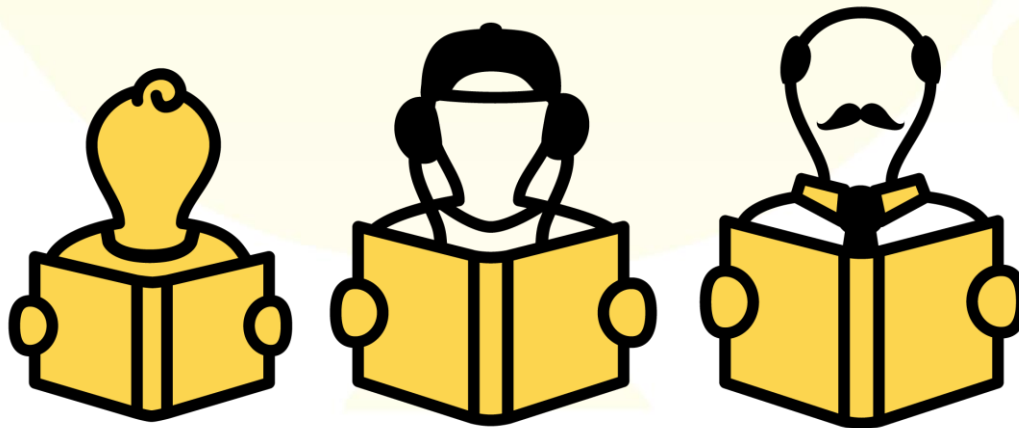


- Membership
 - Continuing Education
 - Certification opportunities
 - Educational conferences
- Evidenced Based practice
- Encouragement
- Relationship building



Lifelong Process

- Professional development does not end with graduation from nursing school
- The progression is a lifelong process that requires active participation.
- Joining is only one path as you continue to develop into a professional nurse.



Panel Participants

- **Facilitator**

- Marcella Carr
- Dean of Sponsors

- **Northeast Region**

- Christopher Otto
- Mary Morris-Bradley

- **Southeast Region**

- Nadirah Keith

- **Midwest Region**

- Sharon Burnett

- **Southwest Region**

- Kenya Smith





**Why did you transition to
graduate chapter?**



What are the benefits of transitioning from beta to graduate chapter?



What are some barriers that you faced during transition?

And what do you think the barriers are today that prevent transition?



What kept you engaged as a beta member that assisted in your decision to transition to graduate chapter?



Do you think a transition to practice program would increase beta transition in Chi Eta Phi Sorority, Inc.?



Again, Why you should transition?

- networking opportunities
- movers and shakers
- career opportunities
- meet professional and scholarly collaborators
- connect the work you're doing
- develop lifelong, close friendships based on shared purpose
- Vital component of lifelong learning



Why you should transition?

- Source of mentors
 - find experts who can help advance your knowledge and skills
- Define and promote excellence in practice
- Career and leadership development
- Next generation



REMEMBER

- Membership help you get the most out of the nursing profession.
- Develop a broader perspective and support the advancement of nursing.
- Consider your options and **TRANSITION!!**



THANK
YOU!

